



WEST COAST CRUISES

HAWAII, MEXICO PANAMA CANAL PACIFIC COAST

SEPTEMBER 2024-APRIL 2025



kenwood cruise
THE ART OF ESCAPE

TABLE OF CONTENTS

DEPARTING THE WEST COAST	2
TOP REASONS TO CRUISE HOLLAND AMERICA LINE	3
HAWAII	4
FEATURED 16-DAY <i>CIRCLE HAWAII HOLIDAY</i>	5
MEXICO	7
FEATURED 11-DAY <i>MEXICO & SEA OF CORTEZ</i>	8
PANAMA CANAL	10
FEATURED 21-DAY <i>PANAMA CANAL</i>	12
PACIFIC COAST	14
FEATURED 4-DAY <i>PACIFIC NORTHWEST</i>	15
FEATURED 7-DAY <i>CLASSIC CALIFORNIA COAST</i>	16
THE BEST OF THE WEST COAST ON BOARD	18
LOCALLY INSPIRED FLAVORS	19
ACTIVITIES DAY & NIGHT	20
NOT HOME FOR THE HOLIDAYS	21
HAVE IT ALL EARLY BOOKING BONUS	22
TERMS & CONDITIONS	23



DEPARTING THE WEST COAST

Simply drive or take a domestic flight to one of our select North America ports to escape the winter chill and enjoy a taste of coastal cruising. Visit the stunning Hawaiian Islands, discover the fascinating Mexican Riviera, marvel at the astounding Panama Canal or explore the beautiful Pacific Coast.



Hawaii



Mexico



Pacific Coast

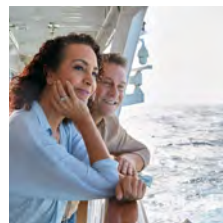


Panama Canal



Lahaina, Hawaii

TOP REASONS TO CRUISE HOLLAND AMERICA LINE



FLEXIBLE ITINERARIES

From a 4-day jaunt along the Pacific Coast to a leisurely 21-day journey through the world-famous Panama Canal, you're sure to find the perfect cruise for you.



CONVENIENT WEST COAST DEPARTURES

See the world from your doorstep! All of our West Coast cruises homeport in Vancouver, Seattle or San Diego, making it easier than ever to experience the Pacific lifestyle.



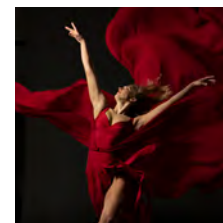
PERFECTLY SIZED SHIPS

Our refreshingly uncrowded mid-sized ships are small enough to reach ports that the megaships cannot, yet are large enough to hold a wealth of dining and entertainment options.



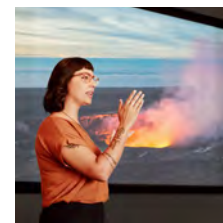
AWARD-WINNING PERSONALIZED SERVICE

Our dedicated crew members delight in providing gracious and warmly attentive service, establishing a genuine connection with our guests. We've been nurturing our service culture for 150 years.



ACTIVITIES DAY & NIGHT

From outdoor sports and painting classes to enriching lectures and cutting-edge concerts, there's always something new to discover on board our beautiful ships.



LOCAL INSIGHTS, GLOBAL EXPERIENCES

Go beyond the usual tourist track and experience amazing new places and cultures in an authentic way with our exclusive destination programming.

EXPERIENCE THE **ALOHA OF HAWAII**

ISLAND SAMPLER

Discover the unique treasures of four different islands on one leisurely sailing, with a late-evening or overnight stay in Honolulu on every itinerary.

ALOHA SPIRIT ON BOARD

Immerse yourself in the culture of the islands with destination programming and onboard talks from Hawaiian locals.

NATURAL BEAUTY

Our mid-sized ships provide the perfect platform to observe Hawaii's rugged volcanic landscapes and palm-lined shores, while our shore excursions deliver waterfalls, lush rain forests, and idyllic beaches.



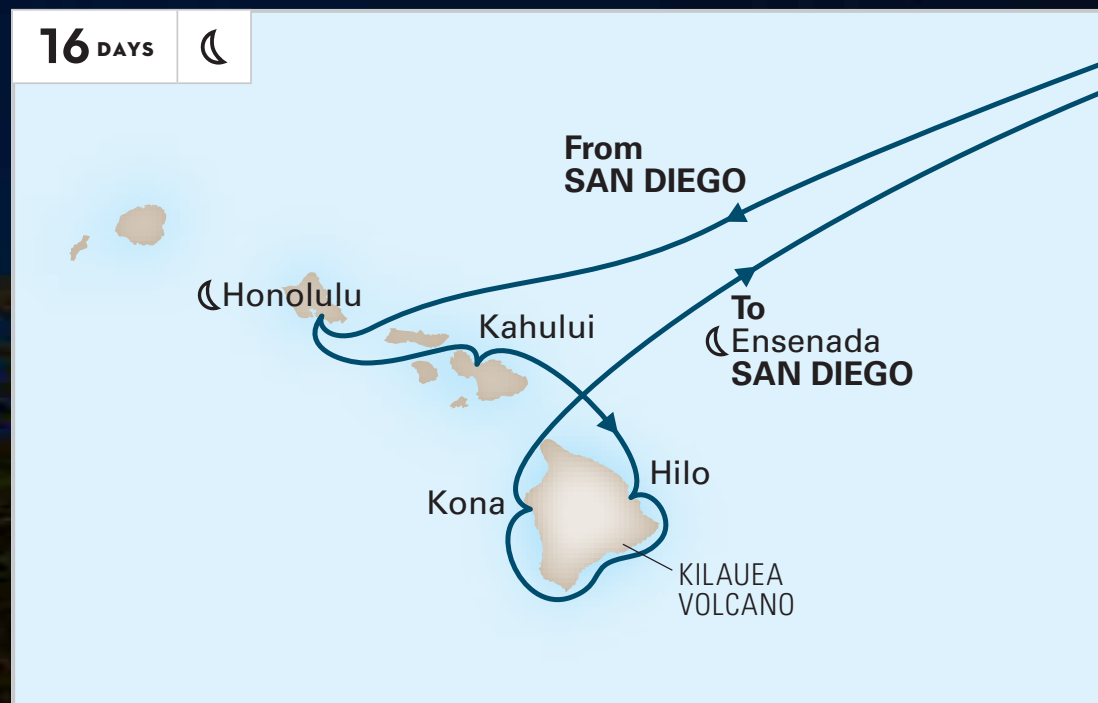
FEATURED

16-DAY CIRCLE HAWAII HOLIDAY

ROUNDTRIP SAN DIEGO

Zaandam Dec 18, 2024

Skip the holiday hassle and cruise your way to paradise! Call on four breathtaking Hawaiian ports as you sail roundtrip from San Diego. Cruise past the Big Island's Kilauea Volcano, go whale watching in Ensenada, and enjoy world-class dining and entertainment during expansive Days at Sea.



FEATURED PORTS

HONOLULU & HILO

Convenient roundtrip sailings from San Diego or Vancouver combine leisurely Days at Sea with unforgettable days on shore exploring Hawaii's black-sand beaches, Polynesian culture, and vibrant marine life.



Hawaiian locals

OVERNIGHT FUN IN HONOLULU

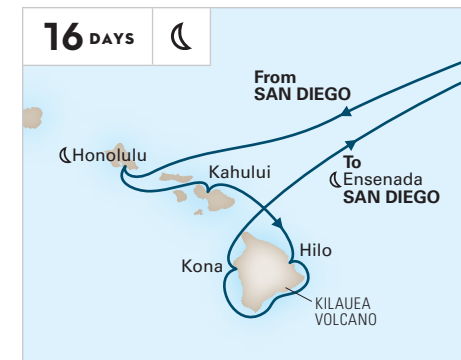
Each of our Hawaii itineraries includes a late-evening or overnight stay in this one-of-a-kind capital, allowing you to discover Honolulu's "spirit of aloha" for yourself. Pay your respects at Pearl Harbor's USS *Arizona* Memorial, visit the United States' only royal palace, or take in a traditional music-and-dance performance at an authentic Hawaiian luau.



Kilauea Volcano, Hawaii

HANG TEN IN HILO

Scenically set along the eastern coast of the "Big Island," Hilo offers a unique blend of natural beauty and cultural heritage. A hub of bountiful farmers' markets, intriguing galleries, and quaint shops, the town serves as a gateway to Hawaii's active volcanoes, stunning botanic gardens, zip-line adventures, and more.



CIRCLE HAWAII HOLIDAY

ROUNDTRIP SAN DIEGO

Zaandam

2024: Dec 18*

* Celebrate the holidays on this sailing.

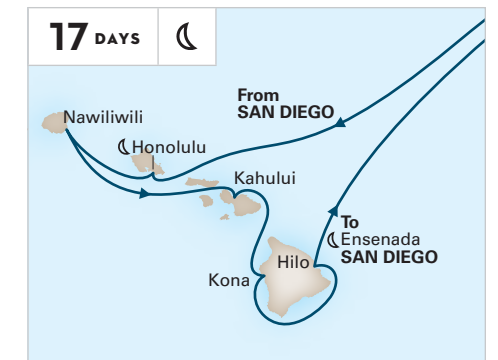


CIRCLE HAWAII

ROUNDTRIP VANCOUVER

Koningsdam

2024: Oct 5

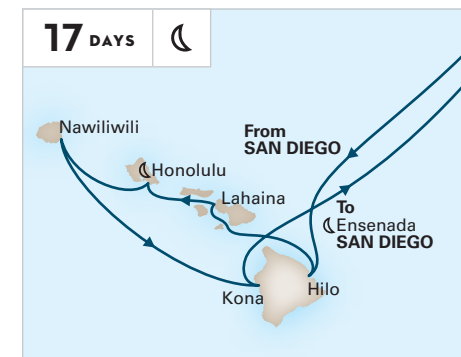


CIRCLE HAWAII

ROUNDTRIP SAN DIEGO

Zaandam

2024: Nov 20



CIRCLE HAWAII

ROUNDTRIP SAN DIEGO

Koningsdam

2025: Jan 11

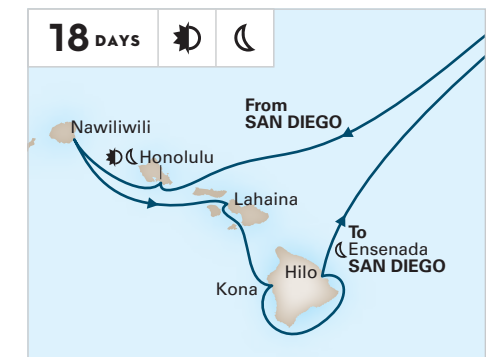


CIRCLE HAWAII

ROUNDTRIP VANCOUVER

Koningsdam

2025: Apr 5



CIRCLE HAWAII

ROUNDTRIP SAN DIEGO

Koningsdam

2025: Jan 28

2024-2025 HAWAII COLLECTORS' VOYAGES

SHIP	CRUISE	DAYS	CRUISE FROM	CRUISE TO	DEPARTURES
Koningsdam	Circle Hawaii & Pacific Coast	21	Vancouver	San Diego	2024: Oct 5
Zaandam	Circle Hawaii & Sea of Cortez	28	San Diego	San Diego	2024: Nov 20
Zaandam	Sea of Cortez & Circle Hawaii Holiday	27	San Diego	San Diego	2024: Dec 7*
Zaandam	Circle Hawaii Holiday & Panama Canal	31	San Diego	Ft. Lauderdale	2024: Dec 18*
Koningsdam	Baja Peninsula & Circle Hawaii	24	San Diego	San Diego	2025: Jan 4
Koningsdam	Wine Country, Pacific Northwest & Circle Hawaii	24	San Diego	Vancouver	2025: Mar 29
Koningsdam	Circle Hawaii & Pacific Northwest	21	Vancouver	Vancouver	2025: Apr 5

SAVOR THE JOURNEY IN **MEXICO**

YEAR-ROUND SUNSHINE

Our Mexican ports of call boast over 300 days of sunshine a year, making them perfect for whale-watching, parasailing, relaxing on the beach or strolling through a local *mercado*.

UNIQUELY CRAFTED ITINERARIES

Cruise the whale-calving grounds of Bahía Magdalena and venture into the Sea of Cortez to less-visited ports including La Paz and Loreto.

AUTHENTIC FLAVORS

Sample local cuisine on board and take part in tequila tastings, vineyard visits, and cooking classes on shore.

FEATURED

11-DAY MEXICO & SEA OF CORTEZ



ROUNDTRIP SAN DIEGO

Koningsdam

Dec 10, 2024

Journey along the glorious Mexican Riviera on board beautiful *Koningsdam*, with its contemporary design, museum-quality art collection, and first-class dining and entertainment venues. Visit three fascinating ports before sailing the storied Sea of Cortez and enjoying a late-evening stay in Loreto, a peaceful pause in Pichilingue (La Paz), and a call on captivating Cabo San Lucas.



FEATURED PORTS

CABO SAN LUCAS & LA PAZ

Our 7- to 11- day sailings let you explore popular seaside cities and immerse yourself in the rich cultural and natural heritage of this sunny land.



COME ALIVE IN CABO SAN LUCAS

This picturesque resort city boasts the postcard-perfect *El Arco*, a host of watersports adventures, farm-fresh cuisine and unforgettable wildlife encounters.



LOSE YOURSELF IN LA PAZ

Go fishing or whale-watching, stroll art galleries and artisans' stalls, snorkel in the Sea of Cortez's warm waters, or visit a museum or wildlife rehabilitation center.



MEXICAN RIVIERA

ROUNDTRIP SAN DIEGO

Koningsdam
2024: Oct 26; Nov 9; Dec 21*, 28*
2025: Mar 22
Zaandam
2025: Apr 26

* Celebrate the holidays on this sailing.



BAJA PENINSULA & SEA OF CORTEZ

ROUNDTRIP SAN DIEGO

Koningsdam
2024: Nov 23
2025: Jan 4
Zaandam
2025: Apr 12



MEXICO & SEA OF CORTEZ

ROUNDTRIP SAN DIEGO

Koningsdam
2024: Nov 30
Zaandam
2025: Apr 2



MEXICO & SEA OF CORTEZ

ROUNDTRIP SAN DIEGO

Zaandam
2024: Dec 7
2025: Mar 22



MEXICO & SEA OF CORTEZ

ROUNDTRIP SAN DIEGO

Koningsdam
2024: Dec 10



MEXICAN RIVIERA & PACIFIC COAST

SAN DIEGO TO VANCOUVER

Zaandam
2025: Apr 26

2024-2025 MEXICO COLLECTORS' VOYAGES

SHIP	CRUISE	DAYS	CRUISE FROM	CRUISE TO	DEPARTURES
<i>Koningsdam</i>	Pacific Coast & Mexican Riviera	11	Vancouver	San Diego	2024: Oct 22
<i>Koningsdam</i>	Mexican Riviera & Classic California Coast	14	San Diego	San Diego	2024: Oct 26
<i>Koningsdam</i>	Classic California Coast & Mexican Riviera	14	San Diego	San Diego	2024: Nov 2
<i>Koningsdam</i>	Mexican Riviera & Classic California Coast	14	San Diego	San Diego	2024: Nov 9
<i>Koningsdam</i>	Classic California Coast & Sea of Cortez	14	San Diego	San Diego	2024: Nov 16
<i>Zaandam</i>	Circle Hawaii & Sea of Cortez	28	San Diego	San Diego	2024: Nov 20
<i>Zaandam</i>	Sea of Cortez & Circle Hawaii Holiday	27	San Diego	San Diego	2024: Dec 7*
<i>Koningsdam</i>	Mexican Riviera Holiday & Baja Peninsula	14	San Diego	San Diego	2024: Dec 28*
<i>Koningsdam</i>	Baja Peninsula & Circle Hawaii	24	San Diego	San Diego	2025: Jan 4
<i>Koningsdam</i>	Mexican Riviera, Wine Country & Pacific Northwest	14	San Diego	Vancouver	2025: Mar 22
<i>Zaandam</i>	Mexican Riviera & Classic California Coast	14	San Diego	San Diego	2025: Apr 12
<i>Zaandam</i>	Mexican Riviera & Classic California Coast	14	San Diego	San Diego	2025: Apr 19

EXPERIENCE AN **ENGINEERING MARVEL**

A MAN-MADE WONDER

Experience this engineering wonder from the comfort of a perfectly sized ship while your Cruise & Travel Director provides fascinating details and answers all your questions.

SAILINGS FROM EAST OR WEST

Our 14- to 21-day Panama Canal cruises depart from Vancouver, Seattle, San Diego and Ft. Lauderdale, allowing you to cross this item off your bucket list your way.

DIVERSE PORTS OF CALL

Embark from exciting West Coast cities like San Diego and Vancouver; visit charming coastal towns in Mexico, Guatemala, and Costa Rica; and sample the flavors of the Caribbean in Aruba and Cartagena.



CROSS THE PANAMA CANAL OFF YOUR BUCKET LIST

The Panama Canal consists of three locks:

- The **Miraflores Locks** are the closest to Panama City and the Pacific Ocean. After entering the locks, you'll feel their two chambers raise the ship 54 feet above sea level to Lake Miraflores and watch the cement walls rise as the water falls away beneath you.
- Next are the **Pedro Miguel Locks**, whose single chamber will raise the ship 31 feet up to Lake Gatun
- The **Gatun Locks** are the closest to the Atlantic Ocean. Their three chambers will lower the ship a total of 85 feet back to sea level.

The variety of birds and wildlife in the surrounding forest, combined with the feat of engineering that is the canal itself, make for a unique experience best undertaken by sea vessel.



FEATURED

21-DAY FALL PANAMA CANAL

SEATTLE TO FT. LAUDERDALE

Eurodam Oct 5, 2024

Escape the winter chill and spend 21 incredible days exploring California's coastal cities, Mexico's cultural treasures, and Central America's intriguing port towns. Transit the jaw-dropping Panama Canal and admire the area's breathtaking birdlife before calling on the windswept Dutch island of Aruba.



FEATURED PORTS

HUATULCO & CARTAGENA

Each of our Panama Canal cruises features a full transit of one of the modern world's great engineering wonders. Enjoy a 14-day sailing between Ft. Lauderdale and San Diego or explore more on one of our 20- or 21-day itineraries to or from the Pacific Northwest.



HAVE A BALL IN HUATULCO

Beyond its beautiful bays and beaches, Huatulco serves up iconic Oaxacan dishes, incredible archaeological sites, and more than 225 avian species sure to set birders' hearts aflutter.



CALL ON CARTAGENA

This beautiful city's colonial-era fortress and massive city walls are both UNESCO World Heritage sites; however, they aren't the only standouts here. Sample Cartagena's Caribbean-influenced cuisine, shop for Colombian emeralds or relax on the shores of its lovely beaches.



FALL PANAMA CANAL
VANCOUVER/SAN DIEGO TO FT. LAUDERDALE
Nieuw Amsterdam
2024:
 Sep 29 21-Day Vancouver to Ft. Lauderdale
 Oct 4 16-Day San Diego to Ft. Lauderdale



PANAMA CANAL
SAN DIEGO TO FT. LAUDERDALE
Zaandam
2025: Jan 3



FALL PANAMA CANAL
SEATTLE/VANCOUVER/SAN DIEGO TO FT. LAUDERDALE
Eurodam
2024:
 Oct 5 21-Day Seattle to Ft. Lauderdale
 Oct 6 20-Day Vancouver to Ft. Lauderdale
 Oct 10 16-Day San Diego to Ft. Lauderdale



SPRING PANAMA CANAL
FT. LAUDERDALE TO SAN DIEGO/VANCOUVER/SEATTLE
Eurodam
2025:
 Apr 12 21-Day Ft. Lauderdale to Seattle
 Apr 12 20-Day Ft. Lauderdale to Vancouver
 Apr 12 14-Day Ft. Lauderdale to San Diego



PANAMA CANAL
FT. LAUDERDALE TO SAN DIEGO
Zaandam
2025: Mar 7



SPRING PANAMA CANAL
FT. LAUDERDALE TO SAN DIEGO/VANCOUVER
Nieuw Amsterdam
2025:
 Apr 13 21-Day Ft. Lauderdale to Vancouver
 Apr 13 17-Day Ft. Lauderdale to San Diego

2024-2025 PANAMA CANAL COLLECTORS' VOYAGES

SHIP	CRUISE	DAYS	CRUISE FROM	CRUISE TO	DEPARTURES
<i>Nieuw Amsterdam</i>	Fall Panama Canal & Eastern Caribbean	28	Ft. Lauderdale	Ft. Lauderdale	2024: Sep 29
<i>Nieuw Amsterdam</i>	Panama Canal & Eastern Caribbean	23	Ft. Lauderdale	Ft. Lauderdale	2024: Oct 5
<i>Zaandam</i>	Circle Hawaii Holiday & Panama Canal	31	San Diego	Ft. Lauderdale	2024: Dec 18★
<i>Eurodam</i>	Western Caribbean Explorer & Panama Canal	31	Ft. Lauderdale	Seattle	2025: Apr 2
<i>Eurodam</i>	Western Caribbean Explorer & Panama Canal	30	Ft. Lauderdale	Vancouver	2025: Apr 2
<i>Eurodam</i>	Western Caribbean Explorer & Panama Canal	24	Ft. Lauderdale	San Diego	2025: Apr 2
<i>Nieuw Amsterdam</i>	Eastern Caribbean & Panama Canal	28	Ft. Lauderdale	Vancouver	2025: Apr 6
<i>Nieuw Amsterdam</i>	Eastern Caribbean & Panama Canal	24	Ft. Lauderdale	San Diego	2025: Apr 6

CHEERS TO **QUICK GETAWAYS**

CHARMING CITIES

Take in the Pacific Coast's ever-changing terrain by sea as you call on stunning ports including Avalon, San Francisco and Astoria.

WEST COAST WINES

Taste some of the finest wines in the country in beloved regions like Northern California's Sonoma Valley, Oregon's Willamette Valley and our home state of Washington's Columbia Valley.

QUICK ESCAPES

Looking to get away? Our 4- to 7-day Pacific Coast itineraries are perfect for a long weekend or rejuvenating escapade.



FEATURED
QUICK ESCAPES

4-DAY PACIFIC NORTHWEST

ROUNDTRIP VANCOUVER

Koningsdam

Apr 22, 2025

Refresh and recharge on this 4-day getaway sailing roundtrip from Vancouver! Leave your worries behind as you step aboard beautiful *Koningsdam*, enjoying delicious meals by day and live music by night before calling on the pride of the Pacific Northwest, our hometown of Seattle, and visiting vivacious Victoria.



FEATURED
QUICK ESCAPES

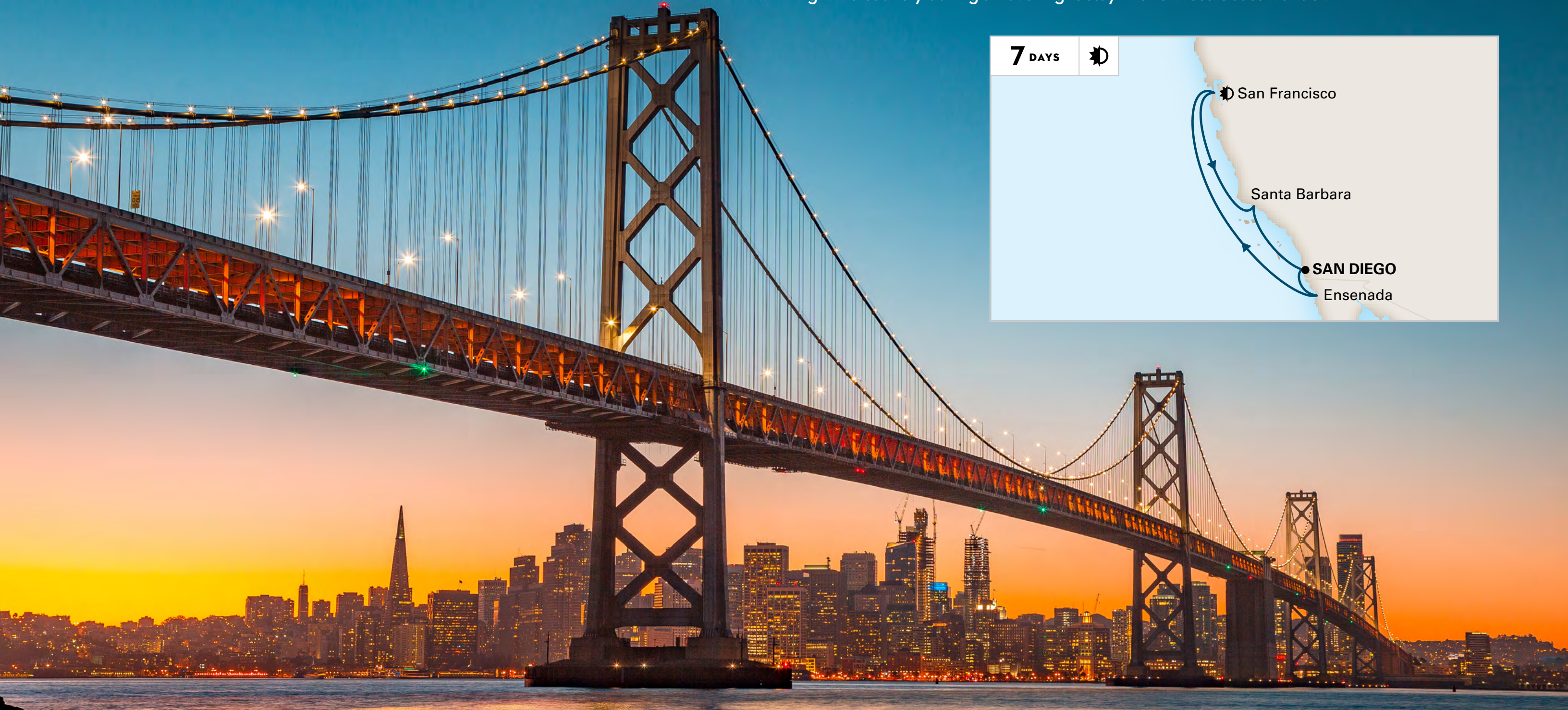
7-DAY CLASSIC CALIFORNIA COAST

ROUNDRIP SAN DIEGO

Zaandam

Apr 19, 2025

Kick back, relax and immerse yourself in classic California style. Taste your way through Ensenada's exciting food scene and watch the coastal landscape change as you sail north to San Francisco. Cross the incomparable Golden Gate Bridge en route to storybook Sausalito or winning wine country during an overnight stay in this West Coast wonder.



FEATURED PORTS

SAN FRANCISCO & VICTORIA

Beginning and ending in San Diego and Vancouver, our Pacific Coast sailings uncover a world of West Coast treasures.



SPEND TIME IN SAN FRANCISCO

Explore the hills, houses and history of Northern California's most iconic city. You may also choose to travel inland to Sonoma County to taste some of this beloved region's world-renowned wines.

VOYAGE TO VICTORIA

British-accented Victoria's singular blend of culture and beauty make it a must-see. Amble through Butchart Gardens' peaceful pathways, admire the Royal British Columbia Museum's amazing artwork or discover western Canada's magnificent marine life.

1-DAY ITINERARIES

Shake up your routine with world-class dining and entertainment on a 1-day Pacific Northwest cruise.

Westerdam	Seattle to Vancouver	2024: Sep 1
Eurodam	Seattle to Vancouver	2024: Oct 5
Eurodam	Vancouver to Seattle	2025: May 2

2024-2025 PACIFIC COAST COLLECTORS' VOYAGES

SHIP	CRUISE	DAYS	CRUISE FROM	CRUISE TO	DEPARTURES
Koningsdam	Circle Hawaii & Pacific Coast	21	Vancouver	San Diego	2024: Oct 5
Koningsdam	Pacific Coast & Mexican Riviera	11	Vancouver	San Diego	2024: Oct 22
Koningsdam	Mexican Riviera & Classic California Coast	14	San Diego	San Diego	2024: Oct 26
Koningsdam	Classic California Coast & Mexican Riviera	14	San Diego	San Diego	2024: Nov 2
Koningsdam	Mexican Riviera & Classic California Coast	14	San Diego	San Diego	2024: Nov 9
Koningsdam	Classic California Coast & Mexican Riviera	14	San Diego	San Diego	2024: Nov 16
Koningsdam	Mexican Riviera, Wine Country & Pacific Northwest	14	San Diego	Vancouver	2025: Mar 22
Koningsdam	Wine Country, Pacific Northwest & Circle Hawaii	24	San Diego	Vancouver	2025: Mar 29
Koningsdam	Circle Hawaii & Pacific Northwest	21	Vancouver	Vancouver	2025: Apr 5
Zaandam	Baja Peninsula & Classic California Coast	14	San Diego	San Diego	2025: Apr 12
Zaandam	Mexican Riviera & Classic California Coast	14	San Diego	San Diego	2025: Apr 19



PACIFIC COAST
VANCOUVER TO SAN DIEGO
Eurodam
2024: Oct 6



PACIFIC COAST
VANCOUVER TO SAN DIEGO
Koningsdam
2024: Oct 22



PACIFIC COAST
SAN DIEGO TO VANCOUVER
Nieuw Amsterdam
2025: Apr 30
Zaandam
2025: May 3



PACIFIC NORTHWEST
ROUNDRIP VANCOUVER
Koningsdam
2025: Apr 22



PACIFIC COAST
VANCOUVER TO SAN DIEGO
Nieuw Amsterdam
2024: Sep 29
Zaandam
2024: Sep 25*

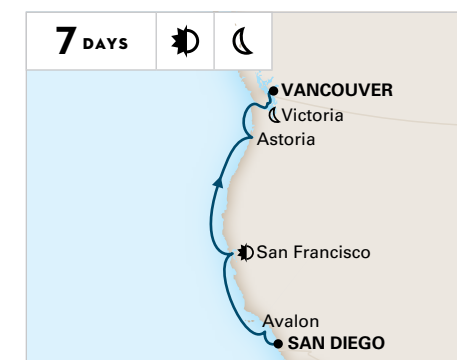


WINE COUNTRY & PACIFIC NORTHWEST
SAN DIEGO TO VANCOUVER
Eurodam
2025: Apr 26

* This itinerary does not include an evening stay in San Francisco; visit HollandAmerica.com for details.



CLASSIC CALIFORNIA COAST
ROUNDRIP SAN DIEGO
Koningsdam
2024: Nov 2, 16



WINE COUNTRY & PACIFIC NORTHWEST
SAN DIEGO TO VANCOUVER
Koningsdam
2025: Mar 29



CLASSIC CALIFORNIA COAST
ROUNDRIP SAN DIEGO
Zaandam
2025: Apr 19

THE BEST OF THE WEST COAST ON BOARD

Days at Sea and nights on board our perfectly sized ships are ideal for enjoying outdoor activities, world-class entertainment, regional flavors, and more.



Learn to hula dance



Savor fresh ingredients



Hear fascinating lectures



Taste local wine

On Hawaii cruises, you'll learn to dance the hula, play the ukulele, make a traditional Hawaiian *lei* and more — all led by our Hawaiian Cultural Ambassadors, whose local perspectives add an extra dimension to your cruise.

On Mexico cruises, join in on a celebration of Mexican cuisine at the Lido Market. After a day of fun and enrichment on shore, enjoy authentic dishes made with fresh local ingredients prepared by our talented onboard chefs.

On Panama Canal cruises, learn more about the science and history behind this world-famous waterway at an interesting onboard talk on the World Stage. During the transit, your Cruise & Travel Director will be on hand to provide in-depth narration and expert insights.

On Pacific Coast cruises, you can sail the Golden Coast while dining on sumptuous meals, enjoying world-class performances and lounging the day away California-style at one of our sparkling outdoor pools.

LOCALLY INSPIRED FLAVORS



Tasty tacos



Mouthwatering margaritas



Fresh fruits



AWARD-WINNING OPTIONS

Find everything from fresh seafood, specialty coffee, and craft cocktails to burgers, pasta, and fresh-made desserts. You can even treat yourself to a late-night snack with our complimentary 24-hour room service.

COMPLIMENTARY DINING OPTIONS

- | | |
|----------------------|----------------|
| 24-hour room service | Dive-In |
| Club Orange | Lido Market |
| The Dining Room | New York Pizza |

SPECIALTY RESTAURANTS

- | | | |
|-------------|--------------------|-----------|
| Canaletto* | Pinnacle Grill* | Tamarind* |
| Nami Sushi* | Rudi's Sel de Mer* | |

COFFEE & TREATS

- | | | |
|--------------------|-------------------|------------|
| Crow's Nest Café* | Gelato* | Juice Bar* |
| Explorations Café* | Grand Dutch Café* | |

BARs & LOUNGES

- | | | |
|-------------------|--------------|--------------|
| Crow's Nest | NOTES | Sea View Bar |
| Explorer's Lounge | Ocean Bar | Tamarind Bar |
| Gallery Bar | Panorama Bar | Taste |
| Lido Bar | Piano Bar | |
| MIX | Pinnacle Bar | |



Offerings vary by ship. Scan here to compare dining, activities and other amenities across our fleet.

[LEARN MORE >](#)

*For a nominal fee.

ACTIVITIES DAY & NIGHT

Begin your day with a meditative Tai Chi session on deck, a spin class in the Fitness Center or a stroll around our teak Promenade Deck. Make new friends on the pickleball court or paint a masterpiece at one of our guided painting sessions. Once the sun goes down, try your luck in the Casino, catch an interactive game show or dance the night away at our award-winning music clubs.



Tai Chi on deck



Sport Court



B.B. King's Blues Club

MUSIC CLUBS



ONLY ON THE WORLD STAGE



AND SO MUCH MORE

SPORTS & ACTIVITIES

- | | |
|-------------------------|-------------------------|
| Acrylic Paint on Canvas | Pickleball |
| Adult Coloring | Punch Needle Embroidery |
| Cornhole | Shuffleboard |
| Flower Arranging | Table Tennis |
| Modern Brush Lettering | Tai Chi |
| Origami | Watercolor Paint |



Offerings vary by ship. Scan here to compare dining, activities and other amenities across our fleet.

[LEARN MORE >](#)

NOT HOME FOR THE HOLIDAYS

START NEW TRADITIONS ON BOARD & ON SHORE

- Leave the party planning to us while you relax, rejuvenate, and reconnect with family and friends on one of our 7-day Mexico or 16-day Hawaii holiday cruises
- Spend your days soaking up the sun's rays and your nights surrounded by softly twinkling lights, enchanting gingerbread villages, and festive holiday décor
- Tuck into sumptuous international feasts prepared by our expert chefs, complete with wine pairings chosen by our onboard Cellar Master — no cooking or cleaning required!
- Give yourself the gift of more comfort and joy and less hustle and bustle this holiday season with Holland America Line



Unwind & recharge



Savor holiday banquets



Revel in onboard festivities



Enjoy top-tier entertainment

Early Booking Bonus Have it all.

- **FREE** Elite Beverage Package Upgrade
- **FREE** Crew Appreciation
- **FREE** Premium Wi-Fi Upgrade
- Shore Excursions
- Specialty Dining
- Low Price Guarantee



LIMITED AVAILABILITY: 60% Off Our Best Amenities Included in Your Fare.

Receive 60% off our top amenities with our new fully refundable Have It All Early Booking Bonus!*

For a limited time, enjoy all the benefits of our standard Have It All package, including Shore Excursion and Specialty Dining credit, plus free Crew Appreciation, a Low Price Guarantee, and upgrades to our Premium Wi-Fi and Elite Beverage Packages.

Free Crew Appreciation

Crew Appreciation, or stateroom gratuities, is covered for you (a value of us\$16 per day for Interior, Ocean View, and Verandah staterooms and us\$17.50 per day for suites) to recognize the efforts of a wide variety of crew members who contribute to the experiences of all our guests.

Low Price Guarantee

If you find a lower, identical fare for your cruise before this offer expires, you are eligible to receive the difference in the form of an Onboard Credit, stateroom upgrade or more!

Book Early to Receive Our Best Value on Top Amenities



Shore Excursions

The longer you cruise, the more you can explore! Cruise 6 to 9 days and get a us\$100 Shore Excursion credit; 10 to 20 days and get a us\$200 Shore Excursion credit; 21 days or more and get a us\$300 Shore Excursion credit.



Specialty Dining

Enhance your cruise with award-winning specialty dining at Pinnacle Grill or Canaletto – with service charges included.



FREE Elite Beverage Package Upgrade

Choose from a large selection of wine, beer, spirits, and cocktails, plus non-alcoholic options such as sodas, coffees, and more – with service charges included.



FREE Premium Wi-Fi Upgrade

Stay connected throughout your journey. Surf the web, use social media, check email, and send messages to friends and family.



Book Today – Limited Availability

Have it all.

Early Booking Bonus Have it all.

Up to 3 Nights' Specialty Dining

Includes service charges; varies by voyage

Up to 3 Nights' Specialty Dining

Includes service charges; varies by voyage

Up to us\$300 Shore Excursion Credit

Varies by voyage length

Up to us\$300 Shore Excursion Credit

Varies by voyage length

Signature Beverage Package

Includes service charges

FREE UPGRADE: Elite Beverage Package

Includes service charges

Wi-Fi Surf Package

FREE UPGRADE: Premium Wi-Fi Package

FREE Prepaid Crew Appreciation

Gratuities

LOW PRICE GUARANTEE

U.S. and Canada only

See page 23 for terms and conditions.

TERMS & CONDITIONS

RESERVATIONS

Accommodations are limited. If you use a travel agent/travel agency ("TA") to book your reservation, you shall pay deposits and payments for Holland America Line's ("HAL") services to such TA. HAL will issue travel documents only if and when it has received full payment from TA. HAL will make any refunds to the applicable TA based only on the amount HAL actually received, less any applicable cancellation fees and charges; guest is responsible for obtaining any refund monies from TA.

DEPOSIT & FINAL PAYMENT REQUIREMENTS

Deposit is required at the time of cruise booking and final payment of balance must be received no later than 75 days prior to departure for 1- to 5-night cruises and 90 days prior to departure for 6+ night cruises.

CANCELLATIONS

Our cancellation policy allows you to cancel your 2024-2025 Hawaii, Mexico, Panama Canal, and Pacific Coast cruise up to 75 to 91 days prior to departure, depending on the cruise, and receive a full refund. If you cancel your 2024-2025 Hawaii, Mexico, Panama Canal, and Pacific Coast cruise within 75 to 90 days prior to departure, depending on the cruise, you are required to pay a cancellation fee (including 3rd and 4th berths) as set forth below. Such fees are based on the fare paid, excluding Taxes, Fees & Port Expenses ("TFPE"), transfers, surcharges, shore and land excursions, and most pre-purchased gift(s) and/or special service(s). See more details in the [Cruise Contract](#). For 2024-2025 Hawaii, Mexico, Panama Canal, and Pacific Coast cruises, the cancellation fee amount varies based on the length of sailing and timing of cancellation as follows:

2024-2025 HAWAII, MEXICO, PANAMA CANAL & PACIFIC COAST CRUISES – UP TO 5 NIGHTS	
Number of Days Before Sailing Date on Which Guest Cancels Cruise	Amount of Cancellation Fee
74-57	Amount equal to deposit requirement
56-29	50% of gross fare
28-16	75% of gross fare
15 or less	100% of gross fare

2024-2025 HAWAII, MEXICO, PANAMA CANAL & PACIFIC COAST CRUISES – 6 NIGHTS OR LONGER	
Number of Days Before Sailing Date on Which Guest Cancels Cruise	Amount of Cancellation Fee
89-76	Amount equal to deposit requirement
75-61	50% of gross fare
60-31	75% of gross fare
30 or less	100% of gross fare

Change to arrangements may be subject to change charges.

CREW APPRECIATION & SERVICE CHARGES

For your convenience, **Crew Appreciation** will automatically be added to your onboard account to recognize the efforts of a wide variety of crew members in various departments, including those in the Dining, Entertainment, Guest Services, and Galley areas. The amount of the Crew Appreciation is based on your stateroom category and is subject to adjustment at your discretion, except as otherwise provided in the Crew Appreciation and Service Charge Policy. A **Service Charge** will automatically be added to optional purchases of beverage packages, drinks, dining room and specialty dining, onboard parties, and other services or amenities provided to guests that are not included in the cruise fare. The Crew Appreciation and Service Charge payments on all vessels in our fleet are pooled and distributed in the form of compensation, including bonuses. For further details, please review our [Crew Appreciation and Service Charge Policy](#).

TAXES, FEES & PORT EXPENSES

"Taxes, Fees & Port Expenses," or "TFPE" as used by HAL, may include any and all fees, charges, tolls, and taxes imposed on HAL by governmental or quasi-governmental authorities, as well as third-party fees and charges arising from a vessel's presence in a harbor or port. TFPE may be assessed per guest, per berth, per ton, or per vessel. TFPE are subject to change, and HAL reserves the right to collect any increases in effect at the time of sailing even if the fare has already been paid in full.

GUESTS WITH DISABILITIES

Holland America Line seeks to accommodate the needs of guests with disabilities, to the extent feasible. Some accommodations require advanced notification. For more information, visit the [Accessible Cruising section](#) of our website.

MEDICAL SERVICES

Each of our ships is equipped with limited medical facilities that are staffed by a physician and registered nurses. Unless otherwise indicated in an active HAL policy (for example, the COVID-19 Protection Program), guest will be charged a fee for all medical services and medications obtained on board. If the onboard physician is unable to care for your needs on board, you will be transferred to medical facilities on shore.

If your condition will require you to have a special medical apparatus or assistance on board, we must be made aware of that at the time of booking in order to determine whether we can accommodate your needs.

PASSPORTS / VISAS / IMMUNIZATIONS

You are solely responsible for securing and having available all proper documentation for the countries visited on your cruise or land tour and for bringing all necessary travel documents such as passports, visas, proof of citizenship, re-entry permits, minors' permissions, and medical certificates showing all necessary vaccinations. Guests should check with their TA or the appropriate governmental authority to determine the necessary documents. Guest will be refused boarding or disembarked without recourse or liability for refund, payment, compensation, or credit of any kind if they do not have proper documentation, and they will be subject to any fine or other costs incurred by HAL that result from improper documentation or non-compliance with applicable regulations.

RESPONSIBILITY

All HAL vessels are owned by HAL Antillen N.V. and operated by Holland America Line N.V. in its capacity as general partner of Cruiseport Curaçao C.V. Transportation on board the ship is provided solely by the Shipowner and Operator and pursuant to the [Cruise Contract](#) that you will receive prior to embarkation. Ships' Registry: The Netherlands.

Non-Holland America Line services (for example, shore excursions) are generally performed by independent contractors. These non-Holland America Line services are solely at your risk and subject to the terms or arrangements with the independent contractor. HAL assumes no responsibility with respect to these non-Holland America Line services (including cancellation, injury, or death) even though HAL may collect monies or make bookings.

ACCURACY OF CONTENTS / GENERAL

Contents of this brochure, including terms and conditions, are subject to change at any time at the sole discretion of HAL. Please refer to [HollandAmerica.com](#) for up-to-date information. **Any advertised offer may be changed or revoked at any time.**

Situations may arise which, in our opinion, make it necessary for us to cancel, advance, or postpone a scheduled departure, change itineraries, or make substitutions involving hotels, restaurants, ports of call, other travel components, vessels, or other modes of transportation. In that event, we do not assume responsibility or liability for any resulting losses, expenses, or inconvenience. We are not required to make refunds once travel commences, regardless of the reason for guests being unable to complete their travel.

The ship names and all other trademarks, slogans, logos, and imagery used herein are, whether or not registered, owned by Holland America Line N.V.


All guests will be required to agree to the [Cruise Contract](#) and all information and terms therein.




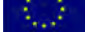
Call 020 7749 5484 and let Kenwood Cruise's dedicated specialists help you plan the voyage of a lifetime.




USA HAVE IT ALL TERMS & CONDITIONS

 **Have It All Early Booking Bonus Offer** ("Early Booking Bonus Offer") fare and its parts are neither transferable nor refundable and have no cash value. Early Booking Bonus Offer fares available only on select departures and exclude Grand Voyages and any voyage lasting 5 days or less. Any advertised fare may be changed or revoked at any time. Fares are subject to full terms and conditions, available at [HollandAmerica.com/package-terms](#). **Elite Beverage Package** has a daily limit of 15 beverages. Available only for beverages priced at us\$15 or less. Must be 21+ for alcoholic beverages. Management reserves the right to revoke the package and may refuse service for any reason. The package excludes beverages purchased in The Shops, from the mini-bar, through 24-hour room service or on Half Moon Cay. **Specialty Dining** based on cruise duration and ship type. Dining options are determined by ship and exclude all events in Pinnacle Grill. **Shore Excursion** offer is based on cruise duration and is per person, not per stateroom. For Alaska cruisetours and 6- to 9-day voyages, eligible guests will receive us\$100 credit per person to apply toward their shore excursion purchase(s). For 10- to 20-day voyages, eligible guests will receive us\$200 credit per person to apply toward their shore excursion purchase(s). For 21+ day voyages (excluding Grand Voyages), eligible guests will receive us\$300 credit per person to apply toward their shore excursion purchase(s). Shore Excursion credit must be used pre-cruise when applied toward an Alaska Cruisetour Land Excursion purchase. Shore Excursion credit must be used on corresponding cruise and is non-refundable. **Wi-Fi Premium Package:** All onboard Internet usage is subject to HAL's standard policies, which may limit or block browsing/use of some sites or applications due to network security and bandwidth usage. Offerings are subject to change without notice. Plan can be used on any device, but only one device can be actively connected at a time. Upgrades are available once on board. Offer applies to 1st/2nd guests in a stateroom only. **Crew Appreciation:** Receive prepaid stateroom gratuities on board. Gratuities for other services, including, but not limited to, bar, dining room, wine accounts and spa/salon services, are not included. **Low Price Guarantee:** If a guest books a HAL cruise with the Early Booking Bonus Offer (the "original booking") and such guest finds a cheaper price for an identical booking within the duration of the Early Booking Bonus Offer (the "Comparison Fare"), the difference may be compensated in the form of an onboard credit, stateroom upgrade or other method. HAL reserves the sole right to determine the method of compensation made to guests. A fare will be considered a Comparison Fare only if its booking consists of details that are identical to those of the original booking (including, but not limited to, the same ship, sail dates, stateroom category and number of guests as the original booking). A determination as to whether the located fare is identical to the original booking will be at HAL's sole discretion. HAL reserves the right to apply this price protection and offer at its discretion. Other restrictions and exclusions may apply. Holland America Line is neither responsible nor liable for any printing errors. Promotion is based on promotion code(s) N2 and based on double occupancy. Ships' Registry: The Netherlands.

UK/EUR HAVE IT ALL TERMS & CONDITIONS (UK/EUR)

  **Have It All Early Booking Bonus Offer** ("Early Booking Bonus Offer") is available for a limited time, on a first-come, first-served basis, to the first guests that make a new booking in connection with the Early Booking Bonus Offer while it is available. Taxes, Fees & Port Expenses are included. All values herein are in USD. Holland America Cruise Line ("HAL") may change or revoke the Offer or its parts at any time. Other exclusions and terms may apply; void where prohibited. Early Booking Bonus Offer and its parts are neither transferable, substitutable, nor redeemable for cash. Early Booking Bonus Offer is available for 1st/2nd guests only and applies only to the cruise portion of Alaska cruisetours. Early Booking Bonus Offer fares available only on select departures and exclude Grand Voyages and any voyage lasting 5 days or less. **Elite Beverage Package** has a daily limit of 15 beverages, including all beverages priced at us\$15 or less and includes beverage service charges. The Elite Beverage Package includes wine, beer, spirits, cocktails, non-alcoholic beverages, sodas, bottled water (sparkling or still, 400ml or less) and coffee. Guests must order one beverage at a time and be 21 years+ for alcoholic beverages. Sharing of any beverage or the package is not permitted. Beverage management/HAL reserve the right to revoke the package if misused and refuse service for any reason, including service of alcoholic beverages to intoxicated guests. Package excludes beverages purchased in The Shops, from the mini-bar, through 24-hour room service or on Half Moon Cay. **Specialty Dining** is based on cruise duration and ship type. For 6- to 9-day voyages, guests will receive one night at Pinnacle Grill, Canaletto or Tamarind. For ships without Tamarind, guests will receive one night at Pinnacle Grill or Canaletto. For 10- to 20-day voyages, guests will receive two nights: one night at Pinnacle Grill and one night at Canaletto or Tamarind. For ships without Tamarind, guests will receive two nights: one night at Pinnacle Grill and one night at Canaletto. For 21+ day voyages (excluding Grand Voyages), guests will receive three nights: one night at Pinnacle Grill, one night at Tamarind and one night at Canaletto. For ships without Tamarind, guests will receive three nights: two nights at Pinnacle Grill and one night at Canaletto. Offer excludes Speciality Dining Events in Pinnacle Grill such as Sel de Mer, A Taste of De Librije and Cellar Master Dinner. Reservations and dining times will be available to pre-reserve. **Shore Excursion credit** is based on cruise duration and is per person, not per stateroom. For Alaska cruisetours and 6- to 9-day voyages, eligible guests will receive us\$100 credit per person to apply toward their shore excursion purchase(s). For 10- to 20-day voyages, eligible guests will receive us\$200 credit per person to apply toward their shore excursion purchase(s). For 21+ day voyages (excluding Grand Voyages), eligible guests will receive us\$300 credit per person to apply toward their shore excursion purchase(s). Shore Excursion credit must be used pre-cruise when applied toward an Alaska Cruisetour Land Excursion purchase. Shore Excursion credit cannot be redeemed for cash value or applied to a non-shore excursion item. **Wi-Fi Premium Package:** All onboard Internet usage is subject to HAL standard policies, which may limit browsing of some sites due to network security and bandwidth usage. Applications that use high bandwidth may be blocked and offerings are subject to change with or without notice. The plan can be activated on any device, but only one device can be actively connected at a time. Upgrades are available once on board for a single day, the remaining duration of the voyage or adding more devices. Offer applies to 1st/2nd guests in a stateroom only. **Crew Appreciation:** Receive prepaid stateroom gratuities on board. Gratuities for other services, including, but not limited to, bar, dining room, wine accounts and spa/salon services, are not included. HAL is not responsible or liable for any printing errors. Promotion is based on promotion code(s) N2 and based on double occupancy. Ships' Registry: The Netherlands.

AUS HAVE IT ALL TERMS & CONDITIONS (AUS)

 **Have It All Early Booking Bonus Offer** ("Early Booking Bonus Offer") is available for a limited time, on a first-come, first-served basis, to the first guests that make a new booking in connection with the Early Booking Bonus Offer while it is available. Taxes, Fees & Port Expenses are included. All values herein are in USD. Holland America Cruise Line ("HAL") may change or revoke the Offer or its parts at any time. Other exclusions and terms may apply; void where prohibited. Early Booking Bonus Offer and its parts are neither transferable, substitutable, nor redeemable for cash. Early Booking Bonus Offer is available for 1st/2nd guests only and applies only to the cruise portion of Alaska cruisetours. Early Booking Bonus Offer fares available only on select 2024 and 2025 departures. **Elite Beverage Package** has a daily limit of 15 beverages, including all beverages priced at us\$15 or less, and includes beverage service charges. The Elite Beverage Package includes wine, beer, spirits, cocktails, non-alcoholic beverages, sodas, bottled water (sparkling or still, 400ml or less) and coffee. Guests must order one beverage at a time and be 21 years+ for alcoholic beverages. Sharing of any beverage or the package is not permitted. Beverage management/HAL reserve the right to revoke the package if misused and refuse service for any reason, including service of alcoholic beverages to intoxicated guests. Package excludes beverages purchased in The Shops, from the mini-bar, through 24-hour room service or on Half Moon Cay. **Specialty Dining** is based on cruise duration and ship type. For 6- to 9-day voyages, guests will receive one night at Pinnacle Grill, Canaletto or Tamarind. For ships without Tamarind, guests will receive one night at Pinnacle Grill or Canaletto. For 10- to 20-day voyages, guests will receive two nights: one night at Pinnacle Grill and one night at Canaletto or Tamarind. For ships without Tamarind, guests will receive two nights: one night at Pinnacle Grill and one night at Canaletto. For 21+ day voyages (excluding Grand Voyages), guests will receive three nights: one night at Pinnacle Grill, one night at Tamarind and one night at Canaletto. For ships without Tamarind, guests will receive three nights: two nights at Pinnacle Grill and one night at Canaletto. Offer excludes Speciality Dining Events in Pinnacle Grill such as Sel de Mer, A Taste of De Librije and Cellar Master Dinner. Reservations and dining times will be available to pre-reserve. **Shore Excursion credit** is based on cruise duration and is per person, not per stateroom. For Alaska cruisetours and 6- to 9-day voyages, eligible guests will receive us\$100 credit per person to apply toward their shore excursion purchase(s). For 10- to 20-day voyages, eligible guests will receive us\$200 credit per person to apply toward their shore excursion purchase(s). For 21+ day voyages (excluding Grand Voyages), eligible guests will receive us\$300 credit per person to apply toward their shore excursion purchase(s). Shore Excursion credit must be used pre-cruise when applied toward an Alaska Cruisetour Land Excursion purchase. Shore Excursion credit must be used on corresponding cruise and is non-refundable. Shore Excursion credit cannot be redeemed for cash value or applied to a non-shore excursion item. **Wi-Fi Premium Package:** All onboard Internet usage is subject to HAL standard policies, which may limit browsing of some sites due to network security and bandwidth usage. Applications that use high bandwidth may be blocked and offerings are subject to change with or without notice. The plan can be activated on any device, but only one device can be actively connected at a time. Upgrades are available once on board for a single day, the remaining duration of the voyage or adding more devices. Offer applies to 1st/2nd guests in a stateroom only. **Crew Appreciation:** Receive prepaid stateroom gratuities on board. Gratuities for other services, including, but not limited to, bar, dining room, wine accounts and spa/salon services, are not included. HAL is not responsible or liable for any printing errors. Promotion is based on promotion code(s) N2 and based on double occupancy. To be read in conjunction with the Holland America Line Cruise Contract at [HollandAmerica.com/en_US/legal-privacy-australia/cruise-contract.html](#), by which guests will be bound. Whilst all information is correct at time of publication, offers are subject to change or withdrawal. Carnival plc trading as Carnival Australia ABN 23 107 998 443 as agent for Holland America Line. Ships' Registry: The Netherlands.



HOLLAND AMERICA LINE
NAVIGATOR DOWNLOAD THE NAVIGATOR® APP

The Holland America Line Navigator® App is your indispensable tool for cruise planning, essential updates, embarkation, managing your onboard experience and booking shore excursions.