

Holland  America

NOVEMBER 2025-MARCH 2026

SOUTH AMERICA & ANTARCTICA CRUISES



kenwood cruise

THE ART OF ESCAPE

Adélie penguins, Antarctica

TABLE OF CONTENTS

TOP REASONS TO CRUISE WITH US	2
ICONIC SITES OF SOUTH AMERICA	3
WILDLIFE & WATERWAYS: SCENIC SOUTH AMERICA	4
SOUTH AMERICA'S UNESCO SITES	5
22-DAY SOUTH AMERICA & ANTARCTICA	6
AWE-INSPIRING ANTARCTICA	7
14-DAY SOUTH AMERICA PASSAGE	8
BROADEN YOUR WORLD IN BUENOS AIRES	9
17-DAY PANAMA CANAL & INCA DISCOVERY	10
LOSE YOURSELF IN LIMA	11
CROSS THE PANAMA CANAL OFF YOUR BUCKET LIST	12
GALÁPAGOS ISLANDS OVERLAND ADVENTURE	13
MACHU PICCHU OVERLAND ADVENTURE	14
COLLECTORS' VOYAGES	15
MEET OOSTERDAM	16
YOUR HOME AWAY FROM HOME	17
DINING, BARS & LOUNGES	18
PORT TO PLATE: FRESH LOCAL INGREDIENTS	19
ACTIVITIES DAY & NIGHT	20
SPA "AHHH"	21
BEST DEAL EVER! HAVE IT ALL EARLY BOOKING BONUS	22
TERMS & CONDITIONS	23



TOP REASONS TO CRUISE SOUTH AMERICA & ANTARCTICA WITH HOLLAND AMERICA LINE

AWARD-WINNING, PERSONALIZED SERVICE

Enjoy gracious, genuine, warmly attentive onboard service. Experience the grandeur of cruising with the personal care and connection that make anyplace feel like home.

IMMERSIVE SHORE EXCURSIONS

Swim with sea lions, stroll South American capitals, or spend up to 7 days exploring the Galápagos Islands, Machu Picchu, and more on our in-depth overland tours.

SPECTACULAR SCENIC CRUISING

From tumbling glaciers to majestic marine mammals to astounding Antarctic ice shelves, take in the unparalleled natural beauty of the Chilean Fjords, Drake Passage and more.

AUTHENTIC CULTURAL EXPERIENCES

Visit an indigenous Emberá tribe, meet a real Chilean *huaso* (cowboy), learn to craft a traditional Panama hat or enjoy an intimate dinner at an Argentine “closed-door restaurant.”

FRESH REGIONAL CUISINE

Enjoy fresh, locally sourced specialties such as Chilean salmon, stuffed *empanadas*, and world-renowned wines including Malbec, Carménère, Torrontés, and more.

ICONIC SITES OF SOUTH AMERICA



GALÁPAGOS ISLANDS

Spend up to 5 days amid this volcanic archipelago's unspoiled landscapes, colorful plants and one-of-a-kind ecosystem — home to a bounty of endemic wildlife found nowhere else on Earth.

MACHU PICCHU

Immerse yourself in the timeless history and intangible magic of this wondrous ancient citadel, with its steep terraces, intricate stone construction, and breathtaking natural grandeur.

TORRES DEL PAINE NATIONAL PARK

Discover the best of Chilean Patagonia's glacial lakes, granite spires, windswept plains, and diverse wildlife on our 6-day overland tour of Torres del Paine National Park and Perito Moreno Glacier.

IGUAZÚ FALLS

Experience this mesmerizing spectacle of crashing waterfalls, emerald rainforests, enchanting wildlife and ever-present rainbows on our in-depth shore excursion from Buenos Aires.

WILDLIFE & WATERWAYS

SCENIC SOUTH AMERICA

Our South American scenic cruising is truly a feast for the senses. See icy-blue glaciers, snow-covered landscapes and the mighty marine mammals that call these waterways home. Hear the mighty rush of waterfalls cascading down soaring slopes or the stark, haunting silence of the imposing Antarctic Peninsula. Feel the rumble beneath your feet as ice chunks break off from their shelves and come crashing down into the waters below. And taste the salt on your lips as fresh sea air envelops you in the sheer, unbridled grandeur of the “end of the world.”



Perito Moreno Glacier, Los Glaciares National Park, Argentina



Whale tail, Antarctica



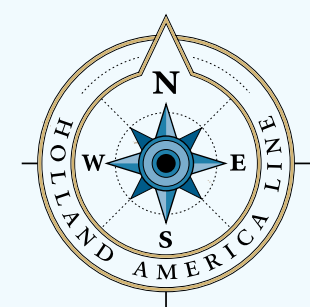
Shoreside sea lions



Les Éclaireuses Lighthouse, Ushuaia, Argentina

SOUTH AMERICA'S UNESCO SITES

Our 2025-2026 South America & Antarctica itineraries allow guests to visit 16 stunning UNESCO World Heritage sites and UNESCO Biosphere Reserves. Designated by the United Nations Educational, Scientific, and Cultural Organization (UNESCO), this esteemed collection represents the best of human heritage and the natural world. Discover a treasure trove of must-see landmarks – from southern Peru’s mysterious Nazca Lines to the diverse terrain and abundant wildlife of Argentina’s Valdés Peninsula and the architectural and cultural diversity of Valparaíso, Chile’s historic seaport.



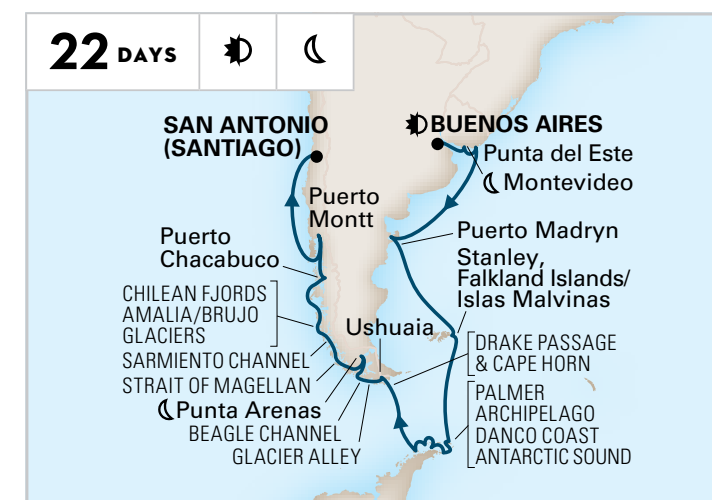


Chinstrap penguins, Antarctica

22-DAY SOUTH AMERICA & ANTARCTICA

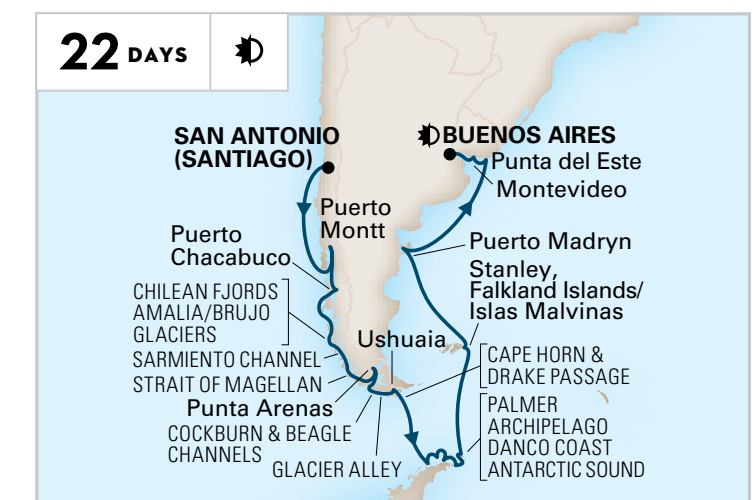
Discover South America’s captivating capitals as you journey between sunny Santiago and bustling Buenos Aires. An overnight stay gives you time to explore Buenos Aires’s grand architecture, lively neighborhoods, and vibrant tango culture or venture inland to call on the world’s largest waterfall system, Iguazú Falls. Visit UNESCO sites, national parks, and the windswept Falkland Islands – home to more penguins than people – or spend 6 days uncovering the wonders of Torres del Paine National Park and Perito Moreno Glacier on an immersive overland tour.

♦ Exact itinerary in Antarctica will depend on permissions, ice, weather conditions and time available. There will be no landings in Antarctica. Visits by cruise ships to the Antarctic require government approval. Holland America Line has obtained government approval for this cruise. There remains the possibility, however, that this approval could be withdrawn if a change is made in applicable governmental requirements. *Celebrate the holidays on this sailing.



SOUTH AMERICA & ANTARCTICA • BUENOS AIRES TO SAN ANTONIO (SANTIAGO)

Oosterdam
 2025: Dec 18* 2026: Jan 31



SOUTH AMERICA & ANTARCTICA • SAN ANTONIO (SANTIAGO) TO BUENOS AIRES

Oosterdam
 2026: Jan 9

AWE-INSPIRING ANTARCTICA

Spend 4 extraordinary days cruising the bays, islands and inlets of the “White Continent” during the Holland America Line Antarctic Experience. Bask in pure, wild nature amid this otherworldly landmass’s towering icebergs, massive glaciers and untouched landscapes. Marvel at creatures great and small — from soaring terns and petrels to playful penguins waddling along rocky shores and massive marine mammals slipping silently through the Southern Ocean. Take in the raw grandeur and power of the earth as our onboard experts offer tips on how to get the most out of this once-in-a-lifetime polar passage.



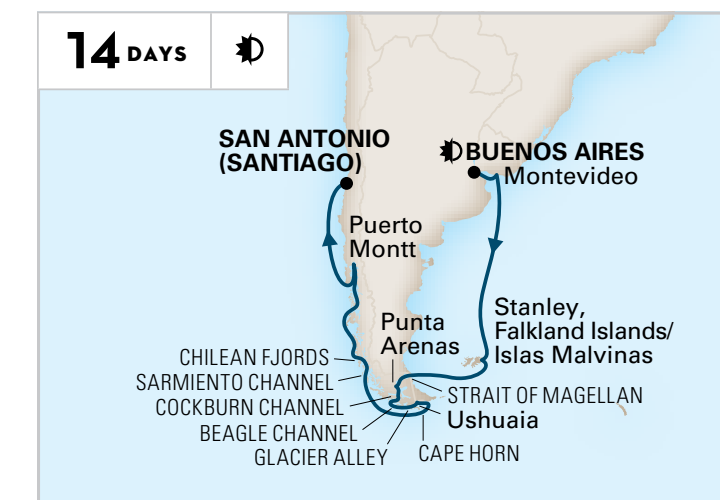
Ushuaia, Argentina

14-DAY SOUTH AMERICA PASSAGE

Experience South America’s jaw-dropping natural wonders. Enjoy scenic cruising through the iconic Chilean Fjords, Drake Passage, and Cape Horn as well as less-traveled waterways such as Glacier Alley and the Cockburn and Beagle Channels. Marvel at Patagonia’s stunning mountains, glaciers, volcanoes, and waterfalls or explore Torres del Paine National Park and Perito Moreno Glacier on an in-depth overland tour. Keep watch for wildlife on board and ride horseback through the countryside, fly-fish the Andean fjords, visit the world’s largest Magellan penguin colony, and so much more on shore.



SOUTH AMERICA PASSAGE
SAN ANTONIO (SANTIAGO) TO BUENOS AIRES
 Oosterdam
 2025: Dec 4 2026: Feb 22



SOUTH AMERICA PASSAGE
BUENOS AIRES TO SAN ANTONIO (SANTIAGO)
 Oosterdam
 2026: Mar 8

BROADEN YOUR WORLD IN **BUENOS AIRES**

Both our *South America Passage* and *South America & Antarctica* itineraries include an overnight stay in Buenos Aires — a city that dances to a rhythm all its own. Birthplace of the scintillating tango, Argentina's dynamic capital seems to burst with passion and energy from every quaint café, sprawling green space, and lively city square. Discover Buenos Aires for yourself on one of our fascinating shore excursions, taking in its mosaic of unique neighborhoods, world-class restaurants and old-world ambience mixed with South American flair.



Plaza de Mayo, Buenos Aires, Argentina



Casa Rosada, Buenos Aires, Argentina



La Boca, Buenos Aires, Argentina



Argentine tango dancers



Panama Canal

17-DAY PANAMA CANAL & INCA DISCOVERY

Experience an engineering marvel, call on South American capitals, and venture on an unforgettable overland adventure to Machu Picchu, the Galápagos Islands, or both. This sweeping journey either departs from or arrives in Ft. Lauderdale, making it easy to explore some of the world's most enthralling destinations from your doorstep. Transit the pioneering Panama Canal, keeping watch for sloths, monkeys, toucans and more. An overnight stay in Fuerte Amador (Panama City) and two in Callao (Lima) let you delve deeply into these charismatic capitals' unique local charm.



PANAMA CANAL & INCA DISCOVERY
FT. LAUDERDALE TO SAN ANTONIO (SANTIAGO)
 Oosterdam
 2025: Nov 17



PANAMA CANAL & INCA DISCOVERY
SAN ANTONIO (SANTIAGO) TO FT. LAUDERDALE
 Oosterdam
 2026: Mar 22



Lima Metropolitan Cathedral, Plaza de Armas, Lima, Peru

LOSE YOURSELF IN **LIMA**

Our *Panama Canal & Inca Discovery* itineraries include two back-to-back overnight stays in Callao (Lima). Colonial meets contemporary in Peru's vibrant capital of Lima, whose innovative restaurants, thriving art galleries, and UNESCO-listed city center come together to create a kaleidoscope of cultural and culinary wonders. For those wishing to venture further afield, the nearby port city of Callao is your gateway to mystical Machu Picchu and the glorious Galápagos Islands.



Eduardo Villena Rey Bridge, Miraflores, Lima, Peru

Indigenous Quechua people



CROSS THE PANAMA CANAL OFF YOUR BUCKET LIST

Our *Panama Canal & Inca Discovery* itineraries include a full transit of the jaw-dropping Panama Canal, which consists of three locks:

- The **Miraflores Locks** are the closest to Panama City and the Pacific Ocean. After entering the locks, you'll feel their two chambers raise the ship 54 feet above sea level to Lake Miraflores and watch the cement walls rise as the water falls away beneath you.
- Next are the **Pedro Miguel Locks**, whose single chamber will raise the ship 31 feet up to Lake Gatun
- The **Gatun Locks** are the closest to the Atlantic Ocean. Their three chambers will lower the ship a total of 85 feet back to sea level.

The variety of birds and wildlife in the surrounding forest, combined with the feat of engineering that is the canal itself, make for a unique experience best undertaken by sea vessel.



GALÁPAGOS ISLANDS

OVERLAND ADVENTURE

Leave the marvels of the mainland behind as you journey to a land lost in time. Available on *Panama Canal & Inca Discovery* itineraries, our Galápagos Islands overland tours are your ticket to this pristine paradise's abundance of unparalleled wildlife. While the giant Galápagos tortoises are undoubtedly its most famous ambassadors, the region is also home to blue-footed boobies, Sally Lightfoot crabs, marine iguanas, frigatebirds and a host of other amazing creatures not found anywhere else on Earth.



Las Grietas, Santa Cruz Island, Galápagos



Galápagos tortoises



Sally Lightfoot crab



Blue-footed boobies



Machu Picchu, Peru



Cusco Cathedral, Cusco, Peru

MACHU PICCHU

OVERLAND ADVENTURE

Venture 7,874 feet above sea level to unravel the secrets behind the “Lost City of the Incas.” Guests on our *Panama Canal & Inca Discovery* cruises have the option to spend 3-4 days in Cusco – former capital of the mighty Inca Empire and your gateway to Machu Picchu. Let us handle the logistics while you peruse colorful local markets, admire Spanish colonial architecture, and contemplate the Incas’ remarkable technical prowess while basking in the 600-year-old citadel’s breathtaking beauty and mesmerizing mystique.

VISIT [HOLLANDAMERICA.COM](https://www.hollandamerica.com) OR CONTACT YOUR TRAVEL ADVISOR OR PERSONAL CRUISE CONSULTANT TODAY.



Llamas, Machu Picchu, Peru

COLLECTORS' VOYAGES

Experience even more of South America & Antarctica with our flexible, thoughtfully designed Collectors' Voyages. These unique itineraries combine back-to-back sailings into one seamless journey that allows you to create the perfect extended cruise vacation.

CRUISE	DAYS	SHIP	EMBARK	DISEMBARK	DEPART
 Panama Canal, Inca & South America Discovery	31	Oosterdam	Ft. Lauderdale	Buenos Aires	2025: Nov 17
 South America, Inca & Panama Canal Discovery	31	Oosterdam	Buenos Aires	Ft. Lauderdale	2026: Mar 8



MEET OOSTERDAM

Experience high style on the high seas aboard *Oosterdam*, whose gracious service, contemporary finishes and dedicated teen and family game room make this classic beauty a hands-down favorite. This mid-sized Vista Class ship is perfect for navigating South America & Antarctica's captivating channels, stunning straits, and fascinating fjords with ease while containing a wealth of dining and entertainment options.

1,964
GUESTS

936 ft.
LENGTH

105.8 ft.
WIDTH

2 PICKLEBALL COURTS

The first and only cruise line partner of the Professional Pickleball Association! Purchase branded starter kits, watch tutorial videos and enjoy complimentary lessons.



8 POOLS & HOT TUBS

Swim in any weather with the Lido Pool's retractable overhead roof! Cool off in the outdoor Sea View Pool, unwind in the Hydropool or escape the chill in one of our five hot tubs.



6 WORLD-CLASS DINING OPTIONS

From grab-and-go choices and poolside fries to elegant restaurants and 24-hour room service, *Oosterdam's* host of eateries is sure to satisfy your every craving.



4 ENTERTAINMENT VENUES

See a show on the World Stage, hear chart-topping hits at Billboard Onboard, rock out at Rolling Stone Lounge or dance the night away with Third Avenue West.



LEARN MORE ABOUT
OOSTERDAM





Neptune Suite

YOUR HOME AWAY FROM HOME

Unpack once with ease amid our generous storage space and ensure peace of mind with our secure in-room safe. Pack as much or as little as you wish with our flexible laundry packages and leave the daily housekeeping to us while you unwind with massage shower heads, pamper yourself with Elemis Aromapure toiletries, and drift comfortably off to sleep in your Mariner's Dream™ bed.

COMFORTABLE STATEROOMS

Settle in in one of Oosterdam's Inside or Ocean View staterooms or spread out in a Verandah stateroom featuring a comfortable sitting area, floor-to-ceiling windows, and (of course) a private teak-lined verandah.

ELEGANT SUITES

Oosterdam's Signature Suites feature a spacious sitting area, sofa bed, dual-sink vanity and more. For a more inclusive experience, Neptune and Pinnacle Suites offer a host of perks ranging from fresh flowers and premium bathrobes to priority boarding and personal concierge service.



Verandah stateroom



Attentive service



Locally prepared *empanadas*

DINING, BARS & LOUNGES

AWARD-WINNING OPTIONS

Find everything from fresh seafood, specialty coffee, and craft cocktails to burgers, pasta, and fresh-made desserts. Enjoy a taste of South America & Antarctica with fresh local ingredients such as Chilean salmon, *dulce de leche*, and locally made *empanadas*.

COMPLIMENTARY DINING OPTIONS

24-hour room service
Dining Room

Dive-In
Lido Market

SPECIALTY RESTAURANTS*

Canaletto

Pinnacle Grill

COFFEE & TREATS*

Crow's Nest Café

BARS & LOUNGES*

Crow's Nest
Explorer's Lounge

Lido Bar
Ocean Bar

Pinnacle Bar
Sea View Bar



Purple Peruvian potatoes



Cocktails & mocktails



Offerings vary by ship. Scan here to compare dining, activities and other amenities across our fleet.

[CLICK HERE TO LEARN MORE](#)

*For a nominal fee.



South American corvina

PORT TO PLATE

FRESH LOCAL INGREDIENTS

At Holland America Line, our cuisine goes beyond the plate. With native fresh fish and ingredients sourced directly from those who know them best, our destination dining tells the story of each region through its unique flavors – from Peruvian ceviche to Patagonian toothfish.

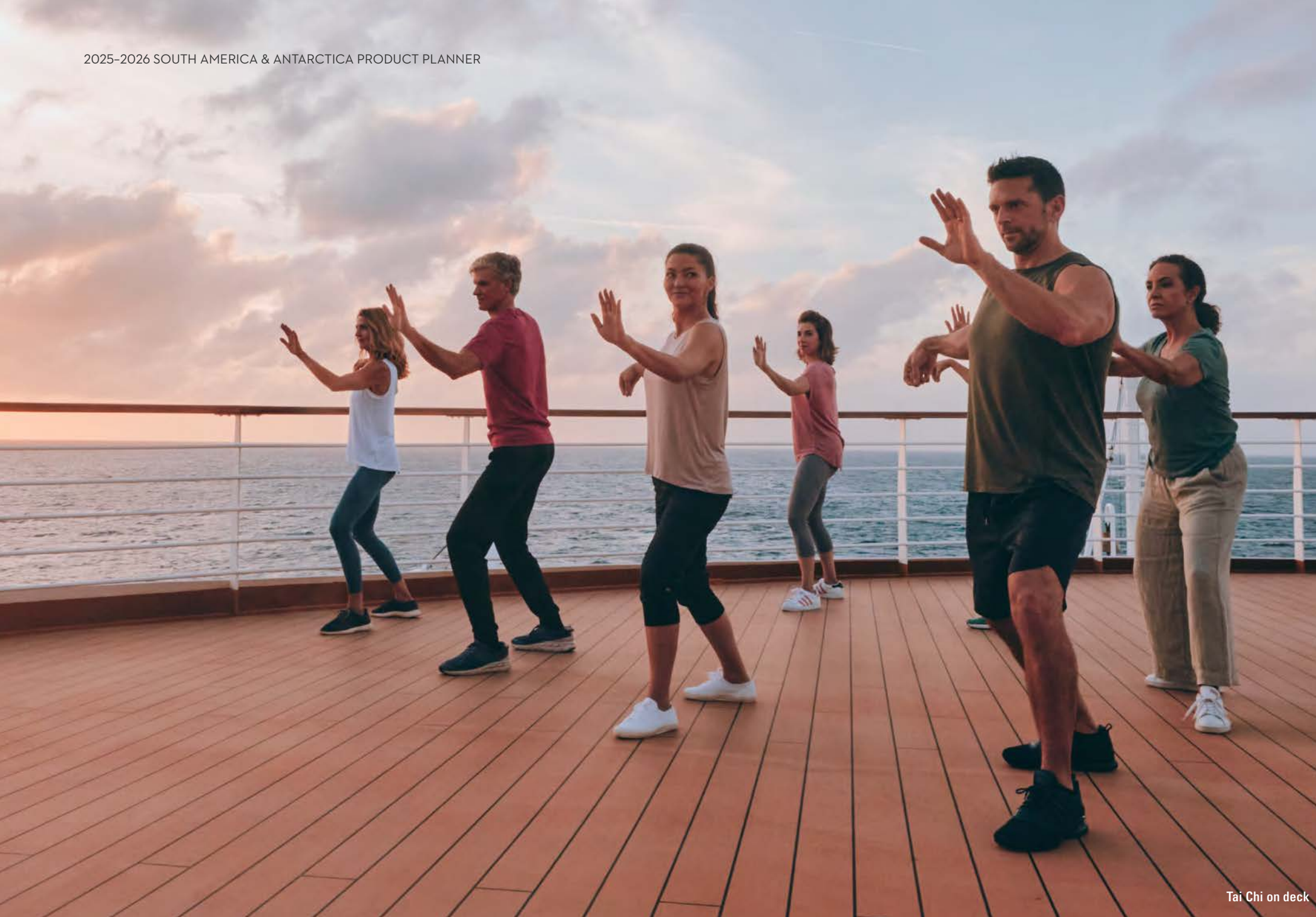
Looking for even more authentic tastes of the region? Our immersive shore excursions include a number of fun and delicious culinary tours. Sample Peruvian *pisco*, Argentine *asados* (roast meats), Uruguayan olive oil and other tasty tidbits.



Fresh catch of the day



Fresh Chilean salmon



Tai Chi on deck

ACTIVITIES DAY & NIGHT

Begin your day with a meditative Tai Chi session on deck, a spin class in the Fitness Center or a stroll around our teak Promenade Deck. Make new friends on the pickleball court or paint a masterpiece at one of our guided painting sessions. Once the sun goes down, try your luck in the Casino, catch an interactive game show or dance the night away at our award-winning music clubs.

MUSIC CLUBS

RollingStone
LOUNGE

billboard
onboard

THIRD AVENUE WEST

ONLY ON THE WORLD STAGE

&COMPANY

CANTARÉ

AND SO MUCH MORE

SPORTS & ACTIVITIES

- | | | |
|-------------------------|-------------------------|------------------|
| Acrylic Paint on Canvas | Modern Brush Lettering | Shuffleboard |
| Adult Coloring | Origami | Table Tennis |
| Cornhole | Pickleball | Tai Chi |
| Flower Arranging | Punch Needle Embroidery | Watercolor Paint |



Offerings vary by ship. Scan here to compare dining, activities and other amenities across our fleet.

CLICK HERE TO **LEARN MORE**



Sport Court



Billboard Onboard



Spa & Salon

SPA "AHHH"

REJUVENATE YOUR SENSES

Recharge in secluded luxury at our outdoor Retreat or indulge in our Thermal Suite and Hydropool at the Spa & Salon. While you soak in the sun, let our attentive crew bring you a cooling drink as you sit back and relax in your private sanctuary.

SPA SERVICES

Acupuncture Services

Couples' Treatments

Facial Treatments

Hair & Nail Services

Massage & Body Therapies

Medi-Spa Cosmetic Treatments

Teeth Whitening

Thermal Suite & Hydropool

WELLNESS & FITNESS

Body Composition Analysis

Circuit Training

The Fitness Center

Guided Meditation & Stretching

Nutritional Consultation

Pain Management Workshop

Personal Trainers

Sport Court



Lido Pool



Fitness Center



Offerings vary by ship. Scan here to compare dining, activities and other amenities across our fleet.

CLICK HERE TO **LEARN MORE**



LIMITED TIME OFFER

Early Booking Bonus Have it all.

Receive 60% off top amenities with the fully refundable Have It All Early Booking Bonus!*

Enjoy all the benefits of our standard Have It All package, including Shore Excursion and Specialty Dining credit, plus

free prepaid Crew Appreciation, our Low Price Guarantee*, and free upgrades to the Elite Beverage Package and Premium Wi-Fi. Availability is limited, so book before this offer sails away!



Magellan penguins, Falkland Islands

BOOK EARLY TO RECEIVE OUR BEST VALUE ON TOP AMENITIES



FREE PREPAID CREW APPRECIATION

Crew Appreciation, or stateroom gratuities, is covered for you (a value of us\$16 per day for Interior, Ocean View, and Verandah staterooms and us\$17.50 per day for suites) to recognize the efforts of a wide variety of crew members who contribute to the experiences of all our guests.



LOW PRICE GUARANTEE

If you find a lower, identical fare for your cruise before this offer expires, you are eligible to receive the difference in the form of an Onboard Credit, stateroom upgrade or more!



SHORE EXCURSIONS

The longer you cruise, the more you can explore!

- 6-9 days and get a us\$100 Shore Excursion Credit
- 10-20 days and get a us\$200 Shore Excursion Credit
- 21+ days and get a us\$300 Shore Excursion Credit



FREE UPGRADE PREMIUM WI-FI

Stay connected throughout your journey. Surf the web, use social media, check email, and send messages to family and friends.



FREE UPGRADE ELITE BEVERAGE PACKAGE

Choose from a large selection of wine, beer, spirits, and cocktails, plus non-alcoholic options such as sodas, coffees, and more – with service charges included.



SPECIALTY DINING

Enhance your cruise with award-winning specialty dining at Canaletto, Tamarind or the famed Pinnacle Grill – with service charges included.

Click to see our **HAVE IT ALL EARLY BOOKING BONUS ITINERARIES**



Book Today – Limited-Time Offer

Early Booking Bonus Have it all.

Up to 3 Nights' Specialty Dining

Includes service charges; varies by voyage

Up to us\$300 Shore Excursion Credit

Varies by voyage length

FREE UPGRADE:
Elite Beverage Package

Includes service charges

FREE UPGRADE:
Premium Wi-Fi

FREE Prepaid Crew Appreciation
Gratuities

LOW PRICE GUARANTEE
U.S. & Canada only

See page 23 for terms and conditions.

TERMS & CONDITIONS

RESERVATIONS

Accommodations are limited. If you use a travel agent/travel agency (“TA”) to book your reservation, you shall pay deposits and payments for Holland America Line’s (“HAL”) services to such TA. HAL will issue travel documents only if and when it has received full payment from TA. HAL will make any refunds to the applicable TA based only on the amount HAL actually received, less any applicable cancellation fees and charges; guest is responsible for obtaining any refund monies from TA.

DEPOSIT & FINAL PAYMENT REQUIREMENTS

Deposit is required at the time of cruise booking and final payment of balance must be received no later than 90 days prior to departure.

CANCELLATIONS

Our cancellation policy allows you to cancel your 2025 South America & Antarctica cruise 90+ days prior to departure, depending on the cruise, and receive a full refund. If you cancel your 2025 South America & Antarctica cruise 89 days or less prior to departure, depending on the cruise, you are required to pay a cancellation fee (including 3rd and 4th berths) as set forth below. Such fees are based on the fare paid, excluding Taxes, Fees & Port Expenses (“TFPE”), transfers, surcharges, shore and land excursions, and most pre-purchased gift(s) and/or special service(s). See more details in the [Cruise Contract](#). For 2025 South America & Antarctica cruises, the cancellation fee amount varies based on the length of sailing and timing of cancellation as follows:

2025–2026 SOUTH AMERICA & ANTARCTICA CRUISES — 14- TO 31-DAY ITINERARIES	
Number of Days Before Sailing Date on Which Guest Cancels Cruise	Amount of Cancellation Fee
90+ days notice	0%
83–89 days notice	an amount equal to deposit requirement
46–82 days notice	50% of gross fare
45 days or less notice	100% of gross fare

Change to arrangements may be subject to change charges.

CREW APPRECIATION & SERVICE CHARGES

For your convenience, Crew Appreciation will automatically be added to your onboard account to recognize the efforts of a wide variety of crew members in various departments, including those in the Dining, Entertainment, Guest Services, and Galley areas. The amount of the Crew Appreciation is based on your stateroom category and is subject to adjustment at your discretion, except as otherwise provided in the Crew Appreciation and Service Charge Policy. A Service Charge will automatically be added to optional purchases of beverage packages, drinks, dining room and specialty dining, onboard parties, and other services or amenities provided to guests that are not included in the cruise fare. The Crew Appreciation and Service Charge payments on all vessels in our fleet are pooled and distributed in the form of compensation, including bonuses. For further details, please review our [Crew Appreciation and Service Charge Policy](#).

TAXES, FEES & PORT EXPENSES

“Taxes, Fees & Port Expenses,” or “TFPE” as used by HAL, may include any and all fees, charges, tolls, and taxes imposed on HAL by governmental or quasi-governmental authorities, as well as third-party fees and charges arising from a vessel’s presence in a harbor or port. TFPE may be assessed per guest, per berth, per ton, or per vessel. TFPE are subject to change, and HAL reserves the right to collect any increases in effect at the time of sailing even if the fare has already been paid in full.

GUESTS WITH DISABILITIES

Holland America Line seeks to accommodate the needs of guests with disabilities, to the extent feasible. Some accommodations require advanced notification. For more information, visit the [Accessible Cruising](#) section of our website.

VISIT HOLLANDAMERICA.COM OR CONTACT YOUR TRAVEL ADVISOR OR PERSONAL CRUISE CONSULTANT TODAY.

MEDICAL SERVICES

Each of our ships is equipped with limited medical facilities that are staffed by a physician and registered nurses. Unless otherwise indicated in an active HAL policy (for example, the COVID-19 Protection Program), guest will be charged a fee for all medical services and medications obtained on board. If the onboard physician is unable to care for your needs on board, you will be transferred to medical facilities on shore. If your condition will require you to have a special medical apparatus or assistance on board, we must be made aware of that at the time of booking in order to determine whether we can accommodate your needs.

PASSPORTS / VISAS / IMMUNIZATIONS

You are solely responsible for securing and having available all proper documentation for the countries visited on your cruise or land tour and for bringing all necessary travel documents such as passports, visas, proof of citizenship, re-entry permits, minors’ permissions, and medical certificates showing all necessary vaccinations. Guests should check with their TA or the appropriate governmental authority to determine the necessary documents. Guest will be refused boarding or disembarked without recourse or liability for refund, payment, compensation, or credit of any kind if they do not have proper documentation, and they will be subject to any fine or other costs incurred by HAL that result from improper documentation or non-compliance with applicable regulations.

RESPONSIBILITY

All HAL vessels are owned by HAL Antillen N.V. and operated by Holland America Line N.V. in its capacity as general partner of Cruiseport Curaçao C.V. Transportation on board the ship is provided solely by the Shipowner and Operator and pursuant to the [Cruise Contract](#) that you will receive prior to embarkation. Ships’ Registry: The Netherlands.

Non–Holland America Line services (for example, shore excursions) are generally performed by independent contractors. These non–Holland America Line services are solely at your risk and subject to the terms or arrangements with the independent contractor. HAL assumes no responsibility with respect to these non–Holland America Line services (including cancellation, injury, or death) even though HAL may collect monies or make bookings.

ACCURACY OF CONTENTS / GENERAL

Contents of this brochure, including terms and conditions, are subject to change at any time at the sole discretion of HAL. Please refer to [HollandAmerica.com](#) for up-to-date information. **Any advertised offer may be changed or revoked at any time.**

Situations may arise which, in our opinion, make it necessary for us to cancel, advance, or postpone a scheduled departure, change itineraries, or make substitutions involving hotels, restaurants, ports of call, other travel components, vessels, or other modes of transportation. In that event, we do not assume responsibility or liability for any resulting losses, expenses, or inconvenience. We are not required to make refunds once travel commences, regardless of the reason for guests being unable to complete their travel.

The ship names and all other trademarks, slogans, logos, and imagery used herein are, whether or not registered, owned by Holland America Line N.V.

All guests will be required to agree to the [Cruise Contract](#) and all information and terms therein.

Exact itinerary in Antarctica will depend on permissions, ice, weather conditions and time available. There will be no landings in Antarctica. Visits by cruise ships to the Antarctic require government approval. Holland America Line has obtained government approval for this cruise. There remains the possibility, however, that this approval could be withdrawn if a change is made in applicable governmental requirements.



Call 020 7749 5484 and let Kenwood Cruise’s dedicated specialists help you plan the voyage of a lifetime.



Holland America Line®



HAVE IT ALL EARLY BOOKING BONUS TERMS & CONDITIONS

Have It All Early Booking Bonus Offer (“Early Booking Bonus Offer”) fare and its parts are neither transferable nor refundable and have no cash value. Early Booking Bonus Offer fares available only on select departures and exclude Grand Voyages and any cruise lasting 5 days or less. Any advertised fare may be changed or revoked at any time. Fares are subject to full terms and conditions, available at [HollandAmerica.com/package-terms](#). **Elite Beverage Package** has a daily limit of 15 beverages. Available only for beverages priced at US\$15 or less. Must be 21+ for alcoholic beverages. Management reserves the right to revoke the package and may refuse service for any reason. The package excludes beverages purchased in The Shops, from the mini-bar, through 24-hour room service or on Half Moon Cay. **Specialty Dining** based on cruise duration and ship type. Dining options are determined by ship and exclude all events in Pinnacle Grill. **Shore Excursion** offer is based on cruise duration and is per person, not per stateroom. For 6- to 9-day cruises, eligible guests will receive US\$100 credit per person to apply toward their shore excursion purchase(s). For 10- to 20-day cruises, eligible guests will receive US\$200 credit per person to apply toward their shore excursion purchase(s). For 21+ day cruises (excluding Grand Voyages), eligible guests will receive US\$300 credit per person to apply toward their shore excursion purchase(s). Shore Excursion credit must be used on corresponding cruise and is non-refundable. **Wi-Fi Premium Package:** All onboard Internet usage is subject to Holland America Line’s (“HAL’s”) standard policies, which may limit or block browsing/use of some sites or applications due to network security and bandwidth usage. Offerings are subject to change without notice. Plan can be used on any device, but only one device can be actively connected at a time. Upgrades are available once on board. Offer applies to 1st/2nd guests in a stateroom only. **Low Price Guarantee:** If a guest books a HAL cruise with the Early Booking Bonus Offer (the “original booking”) and such guest finds a cheaper price for an identical booking within the duration of the Early Booking Bonus Offer (the “Comparison Fare”), the difference may be compensated in the form of an onboard credit, stateroom upgrade or other method. HAL reserves the sole right to determine the method of compensation made to guests. A fare will be considered a Comparison Fare only if its booking consists of details that are identical to those of the original booking (including, but not limited to, the same ship, sail dates, stateroom category and number of guests as the original booking). A determination as to whether the located fare is identical to the original booking will be at HAL’s sole discretion. HAL reserves the right to apply this price protection and offer at its discretion. Other restrictions and exclusions may apply. Holland America Line is neither responsible nor liable for any printing errors. Promotion is based on promotion code(s) N2 and based on double occupancy. Ships’ Registry: The Netherlands.



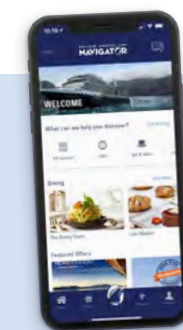
HAVE IT ALL EARLY BOOKING BONUS TERMS & CONDITIONS

Have It All Early Booking Bonus Offer (“Early Booking Bonus Offer”) is available for a limited time, on a first-come, first-served basis, to the first guests that make a new booking in connection with the Early Booking Bonus Offer while it is available. Taxes, Fees & Port Expenses are included. All values herein are in USD. Holland America Cruise Line (“HAL”) may change or revoke the Offer or its parts at any time. Early Booking Bonus Offer is valued at US\$130 per day. Other exclusions and terms may apply; void where prohibited. Early Booking Bonus Offer and its parts are neither transferable, substitutable, nor redeemable for cash. Early Booking Bonus Offer is available for 1st/2nd guests only. Early Booking Bonus Offer fares available only on select departures and exclude Grand Voyages and any cruise lasting 5 days or less. **Elite Beverage Package** has a daily limit of 15 beverages, including all beverages priced at US\$15 or less and includes beverage service charges. The Elite Beverage Package includes wine, beer, spirits, cocktails, non-alcoholic beverages, sodas, bottled water (sparkling or still, 400ml or less) and coffee. Guests must order one beverage at a time and be 21 years+ for alcoholic beverages. Sharing of any beverage or the package is not permitted. Beverage management/HAL reserve the right to revoke the package if misused and refuse service for any reason, including service of alcoholic beverages to intoxicated guests. Package excludes beverages purchased in The Shops, from the mini-bar, through 24-hour room service or on Half Moon Cay. **Specialty Dining** is based on cruise duration and ship type. For 6- to 9-day cruises, guests will receive one night at Pinnacle Grill, Canaletto or Tamarind. For ships without Tamarind, guests will receive one night at Pinnacle Grill or Canaletto. For 10- to 20-day cruises, guests will receive two nights: one night at Pinnacle Grill and one night at Canaletto or Tamarind. For ships without Tamarind, guests will receive two nights: one night at Pinnacle Grill and one night at Canaletto. For 21+ day cruises (excluding Grand Voyages), guests will receive three nights: one night at Pinnacle Grill, one night at Tamarind and one night at Canaletto. For ships without Tamarind, guests will receive three nights: two nights at Pinnacle Grill and one night at Canaletto. Offer excludes Speciality Dining Events in Pinnacle Grill such as Sel de Mer, A Taste of De Librije and Cellar Master Dinner. Reservations and dining times will be available to pre-reserve. **Shore Excursion credit** is based on cruise duration and is per person, not per stateroom. For 6- to 9-day cruises, eligible guests will receive US\$100 credit per person to apply toward their shore excursion purchase(s). For 10- to 20-day cruises, eligible guests will receive US\$200 credit per person to apply toward their shore excursion purchase(s). For 21+ day cruises (excluding Grand Voyages), eligible guests will receive US\$300 credit per person to apply toward their shore excursion purchase(s). Shore Excursion credit must be used on corresponding cruise and is non-refundable. Shore Excursion credit cannot be redeemed for cash value or applied to a non–shore excursion item. **Wi-Fi Premium Package:** All onboard Internet usage is subject to HAL standard policies, which may limit browsing of some sites due to network security and bandwidth usage. Applications that use high bandwidth may be blocked and offerings are subject to change with or without notice. The plan can be activated on any device, but only one device can be actively connected at a time. Upgrades are available once on board for a single day, the remaining duration of the voyage or adding more devices. Offer applies to 1st/2nd guests in a stateroom only. **Crew Appreciation:** Receive prepaid stateroom gratuities on board. Gratuities for other services, including, but not limited to, bar, dining room, wine accounts and spa/salon services, are not included. HAL is not responsible or liable for any printing errors. Promotion is based on promotion code(s) N2 and based on double occupancy. Ships’ Registry: The Netherlands.



HAVE IT ALL EARLY BOOKING BONUS TERMS & CONDITIONS

Have It All Early Booking Bonus Offer (“Early Booking Bonus Offer”) is available for a limited time, on a first-come, first-served basis, to the first guests that make a new booking in connection with the Early Booking Bonus Offer while it is available. Taxes, Fees & Port Expenses are included. All values herein are in USD. Holland America Cruise Line (“HAL”) may change or revoke the Offer or its parts at any time. Early Booking Bonus Offer is valued at US\$130 per day. Other exclusions and terms may apply; void where prohibited. Early Booking Bonus Offer and its parts are neither transferable, substitutable, nor redeemable for cash. Early Booking Bonus Offer is available for 1st/2nd guests only. Early Booking Bonus Offer fares available only on select 2024 and 2025 departures. **Elite Beverage Package** has a daily limit of 15 beverages, including all beverages priced at US\$15 or less, and includes beverage service charges. The Elite Beverage Package includes wine, beer, spirits, cocktails, non-alcoholic beverages, sodas, bottled water (sparkling or still, 400ml or less) and coffee. Guests must order one beverage at a time and be 21 years+ for alcoholic beverages. Sharing of any beverage or the package is not permitted. Beverage management/HAL reserve the right to revoke the package if misused and refuse service for any reason, including service of alcoholic beverages to intoxicated guests. Package excludes beverages purchased in The Shops, from the mini-bar, through 24-hour room service or on Half Moon Cay. **Specialty Dining** is based on cruise duration and ship type. For 6- to 9-day cruises, guests will receive one night at Pinnacle Grill, Canaletto or Tamarind. For ships without Tamarind, guests will receive one night at Pinnacle Grill or Canaletto. For 10- to 20-day cruises, guests will receive two nights: one night at Pinnacle Grill and one night at Canaletto or Tamarind. For ships without Tamarind, guests will receive two nights: one night at Pinnacle Grill and one night at Canaletto. For 21+ day cruises (excluding Grand Voyages), guests will receive three nights: one night at Pinnacle Grill, one night at Tamarind and one night at Canaletto. For ships without Tamarind, guests will receive three nights: two nights at Pinnacle Grill and one night at Canaletto. Offer excludes Speciality Dining Events in Pinnacle Grill such as Sel de Mer, A Taste of De Librije and Cellar Master Dinner. Reservations and dining times will be available to pre-reserve. **Shore Excursion credit** is based on cruise duration and is per person, not per stateroom. For 6- to 9-day cruises, eligible guests will receive US\$100 credit per person to apply toward their shore excursion purchase(s). For 10- to 20-day cruises, eligible guests will receive US\$200 credit per person to apply toward their shore excursion purchase(s). For 21+ day cruises (excluding Grand Voyages), eligible guests will receive US\$300 credit per person to apply toward their shore excursion purchase(s). Shore Excursion credit must be used on corresponding cruise and is non-refundable. Shore Excursion credit cannot be redeemed for cash value or applied to a non–shore excursion item. **Wi-Fi Premium Package:** All onboard Internet usage is subject to HAL standard policies, which may limit browsing of some sites due to network security and bandwidth usage. Applications that use high bandwidth may be blocked and offerings are subject to change with or without notice. The plan can be activated on any device, but only one device can be actively connected at a time. Upgrades are available once on board for a single day, the remaining duration of the voyage or adding more devices. Offer applies to 1st/2nd guests in a stateroom only. **Crew Appreciation:** Receive prepaid stateroom gratuities on board. Gratuities for other services, including, but not limited to, bar, dining room, wine accounts and spa/salon services, are not included. HAL is not responsible or liable for any printing errors. Promotion is based on promotion code(s) N2 and based on double occupancy. To be read in conjunction with the Holland America Line Cruise Contract at [HollandAmerica.com/en_US/legal-privacy-australia/cruise-contract.html](#), by which guests will be bound. Whilst all information is correct at time of publication, offers are subject to change or withdrawal. Carnival plc trading as Carnival Australia ABN 23 107 998 443 as agent for Holland America Line. Ships’ Registry: The Netherlands.



HOLLAND AMERICA LINE
NAVIGATOR

DOWNLOAD THE
NAVIGATOR® APP

The **Holland America Line Navigator® App** is your indispensable tool for cruise planning, essential updates, embarkation, managing your onboard experience and booking shore excursions.